



FifthAvenueHomes.ca



FIFTH
AVENUE
HOMES
RICHMOND HILL

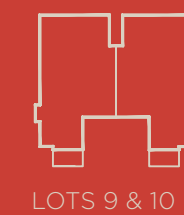
LS-2

LS-2

3 BEDROOM

Interior 3270 sq.ft.

Includes 611 sq.ft of optional finished basement



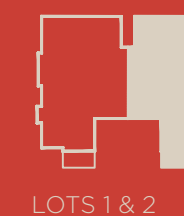
LOTS 9 & 10



LOTS 5 & 6



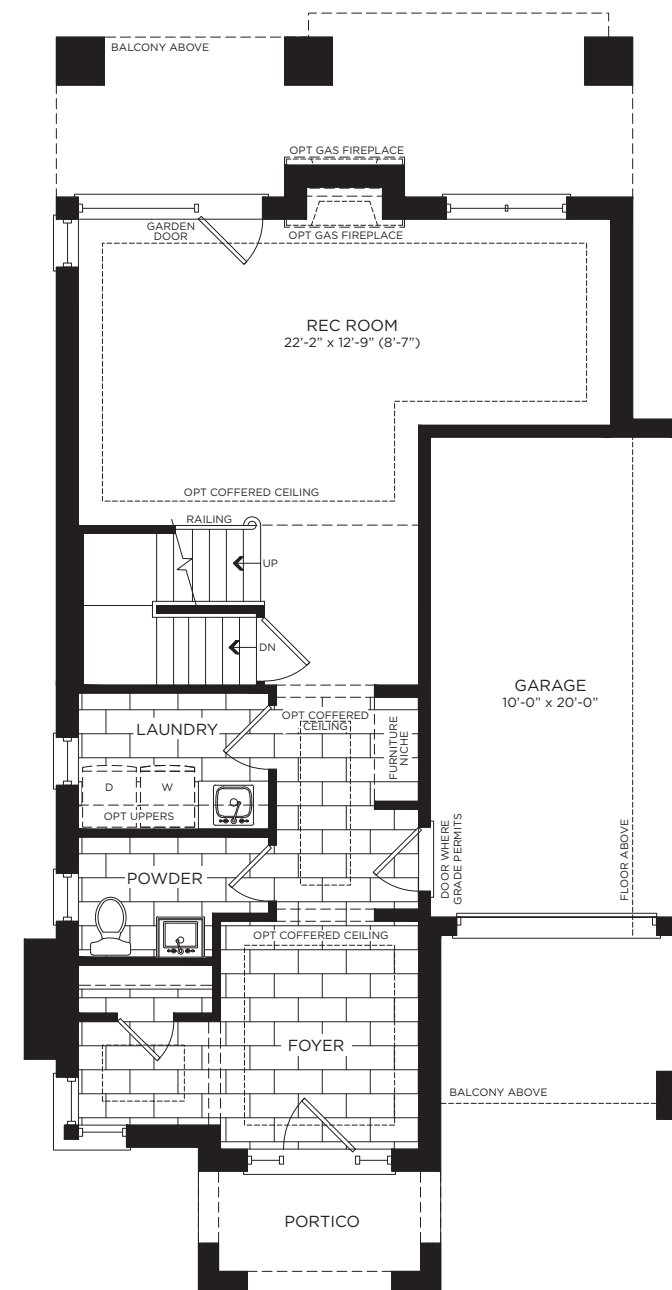
LOTS 7 & 8



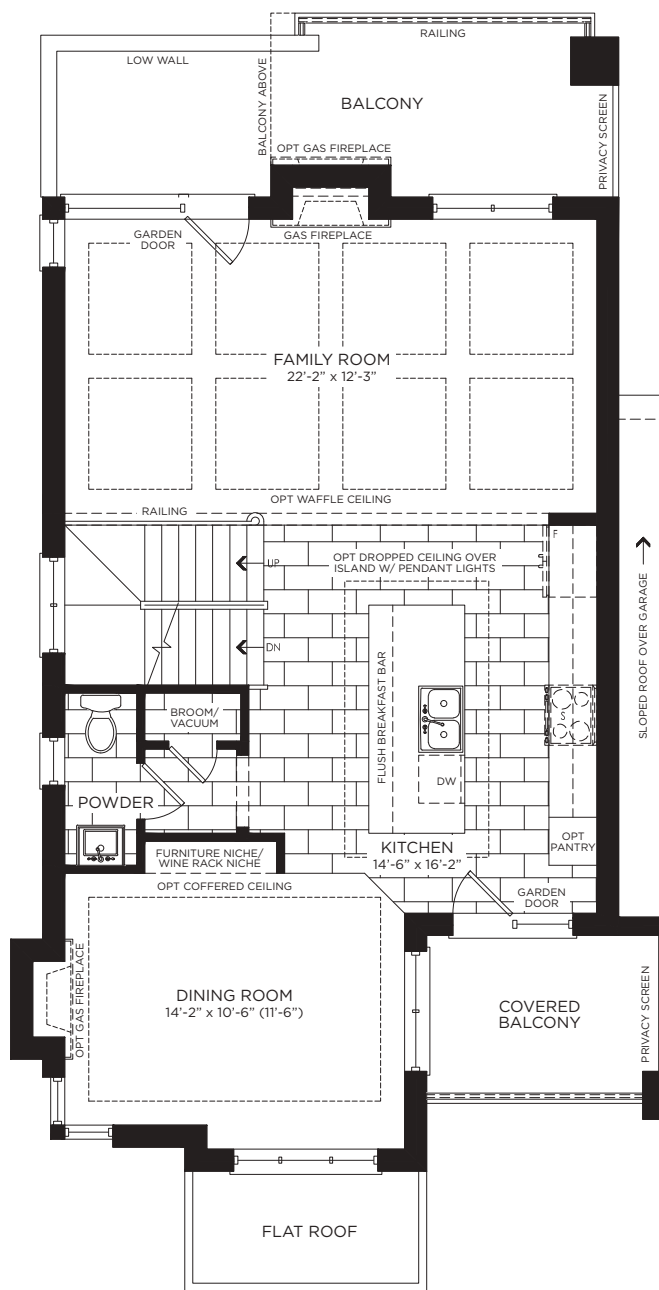
LOTS 1 & 2



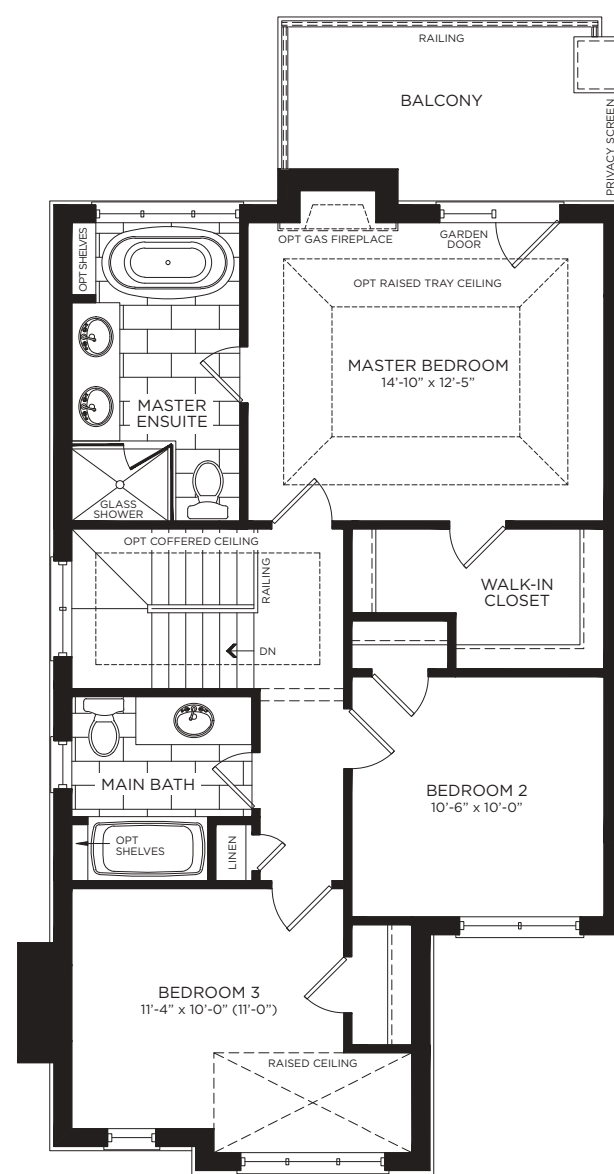
LOTS 3 & 4



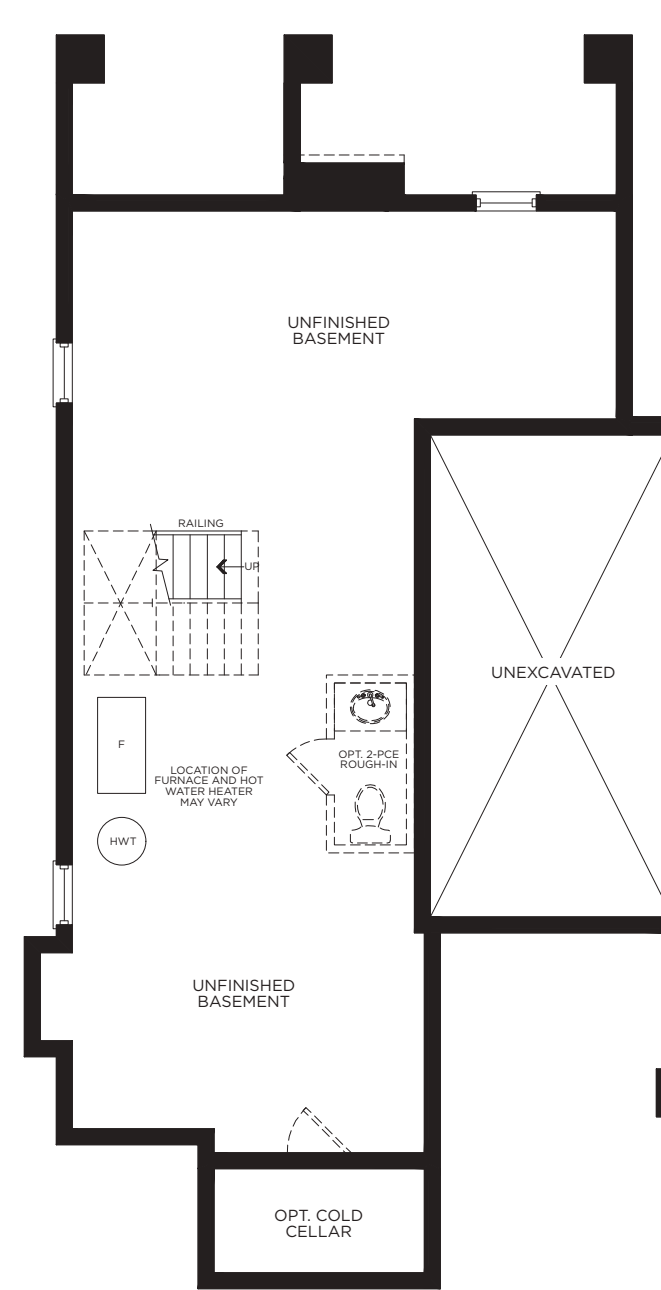
Ground Floor - Elevation A



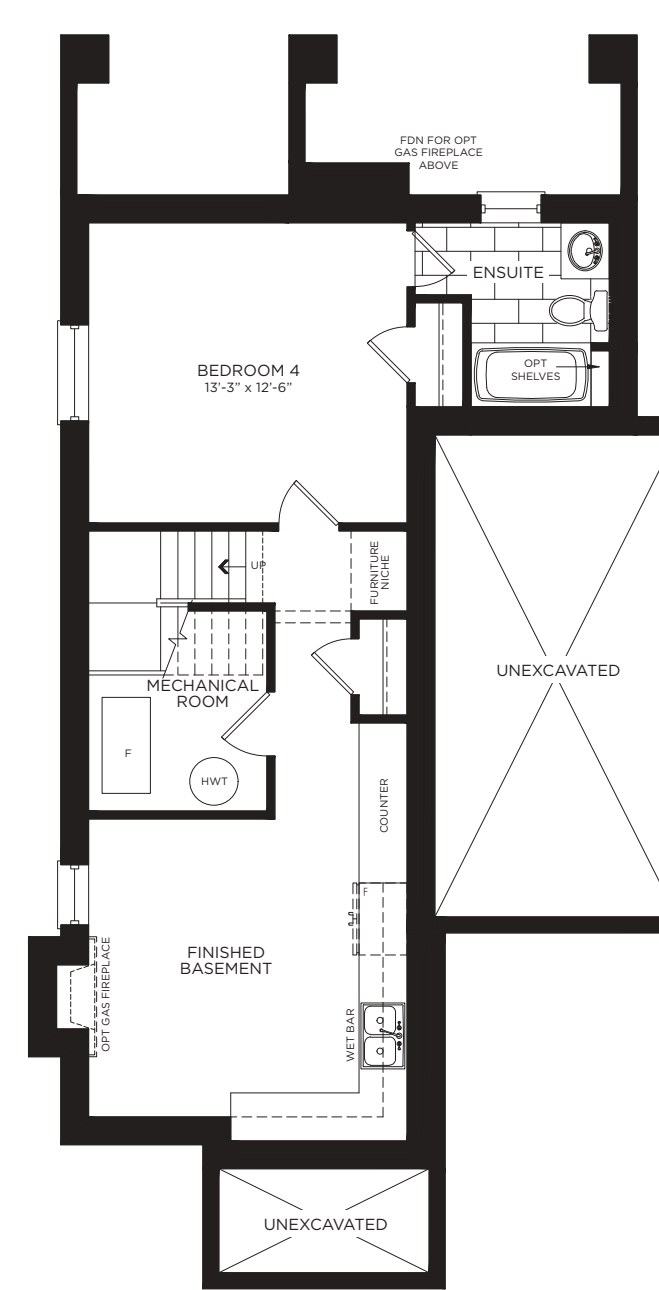
Main Floor - Elevation A



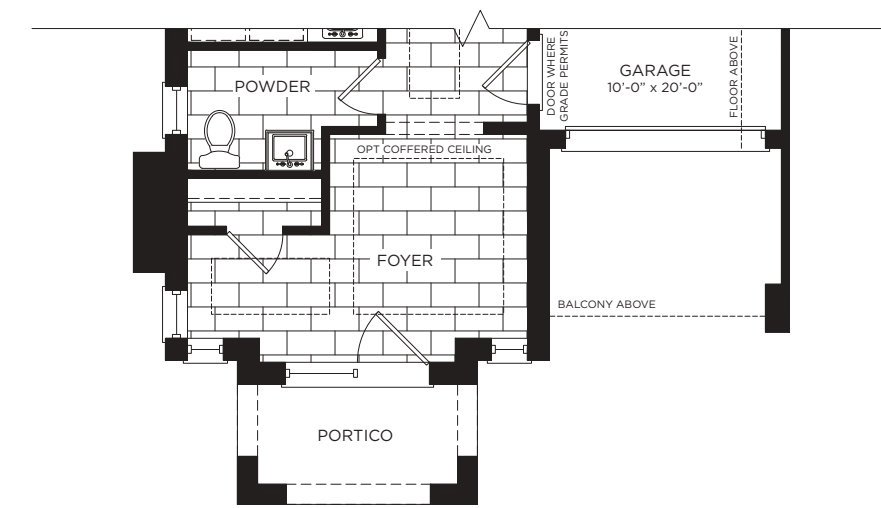
Upper Floor - Elevation A



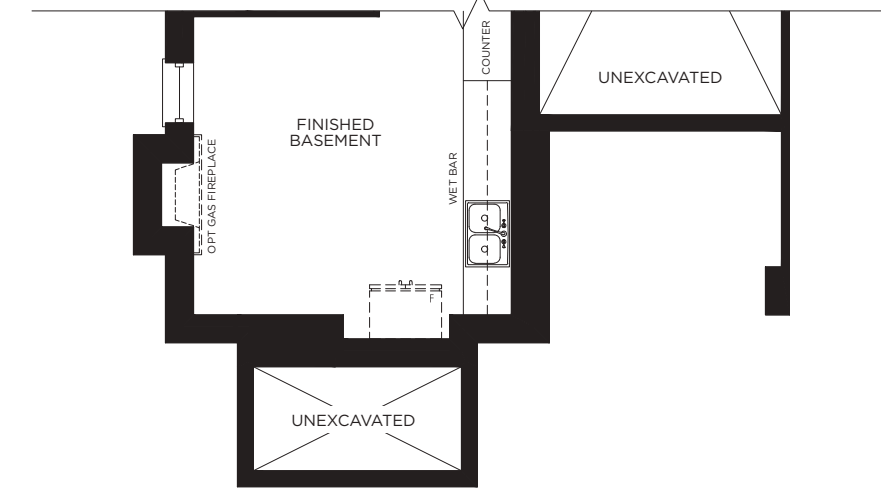
Basement - Elevation A



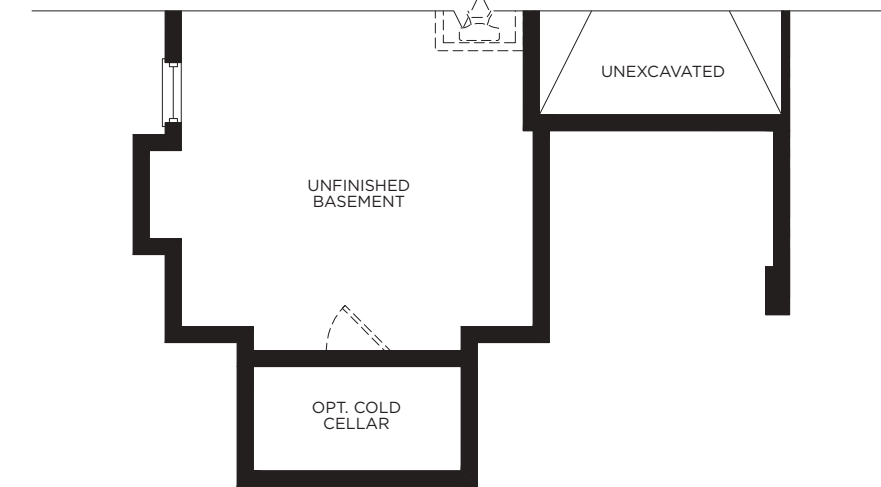
Opt. Basement - Elevation A



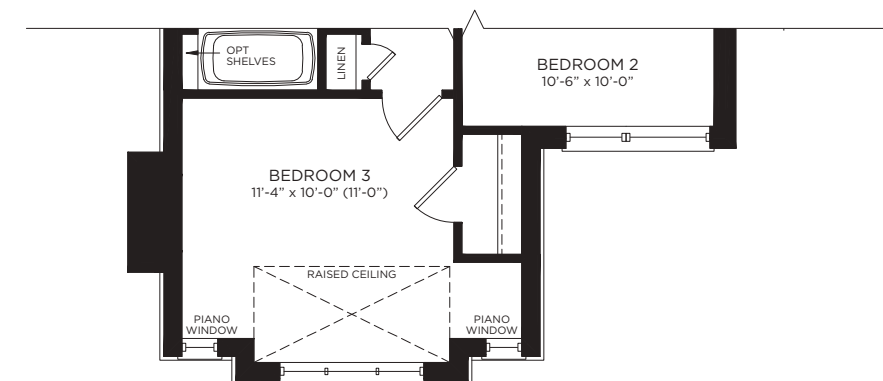
Part Ground Floor - Elevation B



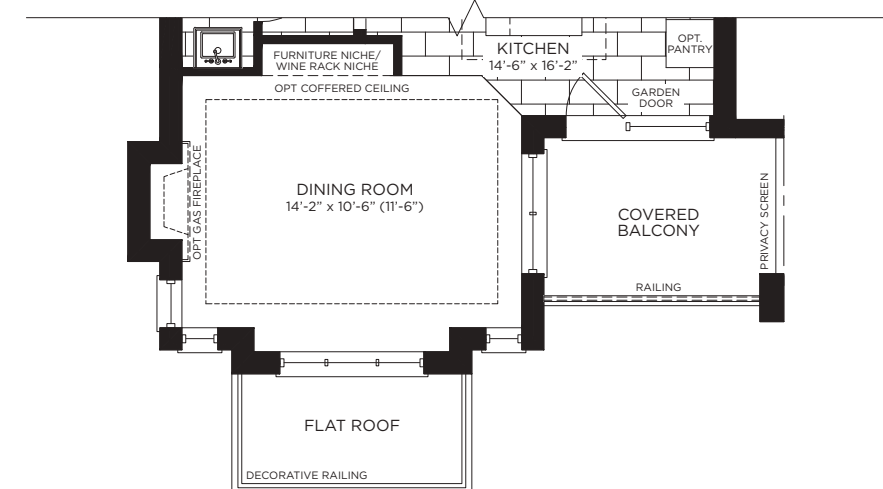
Part Opt. Basement - Elevation B



Part Basement - Elevation B



Part Upper Floor - Elevation B



Part Main Floor - Elevation B

E. & O. E. All materials, specifications, and floor plans are subject to change without notice and are not to be construed as being final and binding. All house renderings are artist's concepts only. All floor plans are approximate dimensions. Actual usable floor space, living area and square footage may vary from that which is stated. Window sizes and location may vary. Construction of a reverse mirror image Dwelling plan is hereby irrevocably accepted by the Purchaser without any right of abatement of Purchase Price and in full satisfaction of the Vendor's obligations as to construction of the Dwelling type hereinbefore described. Some designs may require upgraded lots. Fifth Avenue Homes. Reproduction of this plan is strictly prohibited. April 2018.