



FifthAvenueHomes.ca



FIFTH
AVENUE
HOMES
RICHMOND HILL

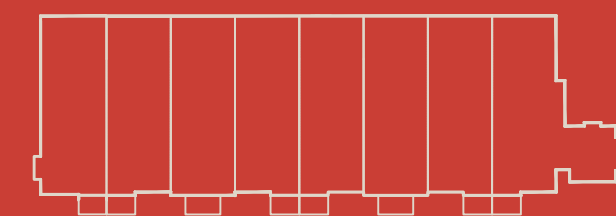
THR-2A

THR-2A

3 BEDROOM

Interior 2311 sq.ft.

Includes 244 sq.ft of optional finished basement



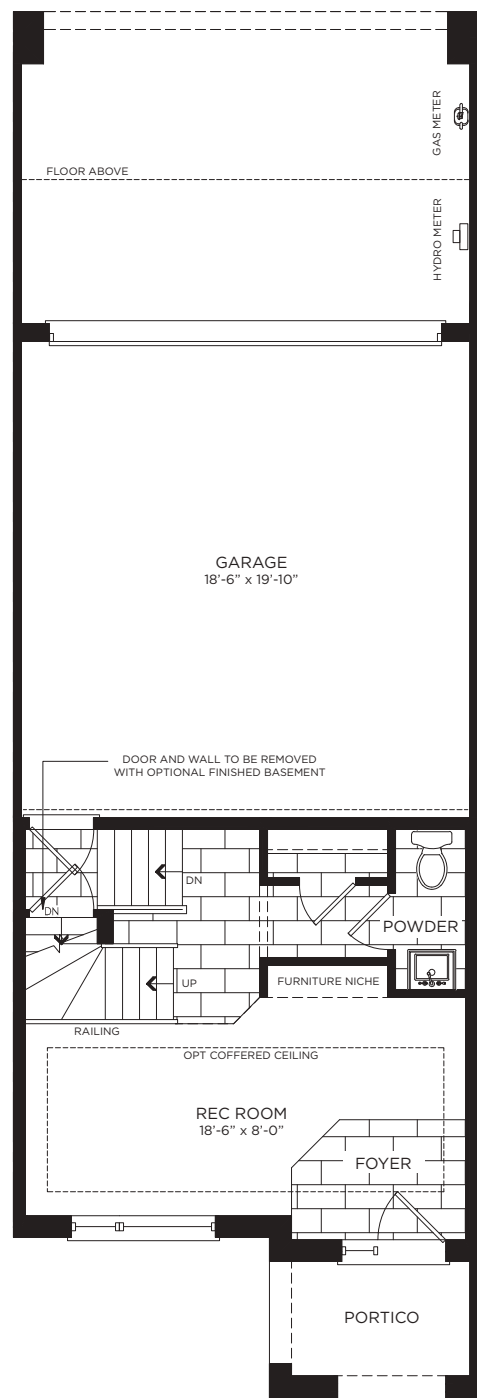
BLOCK 7



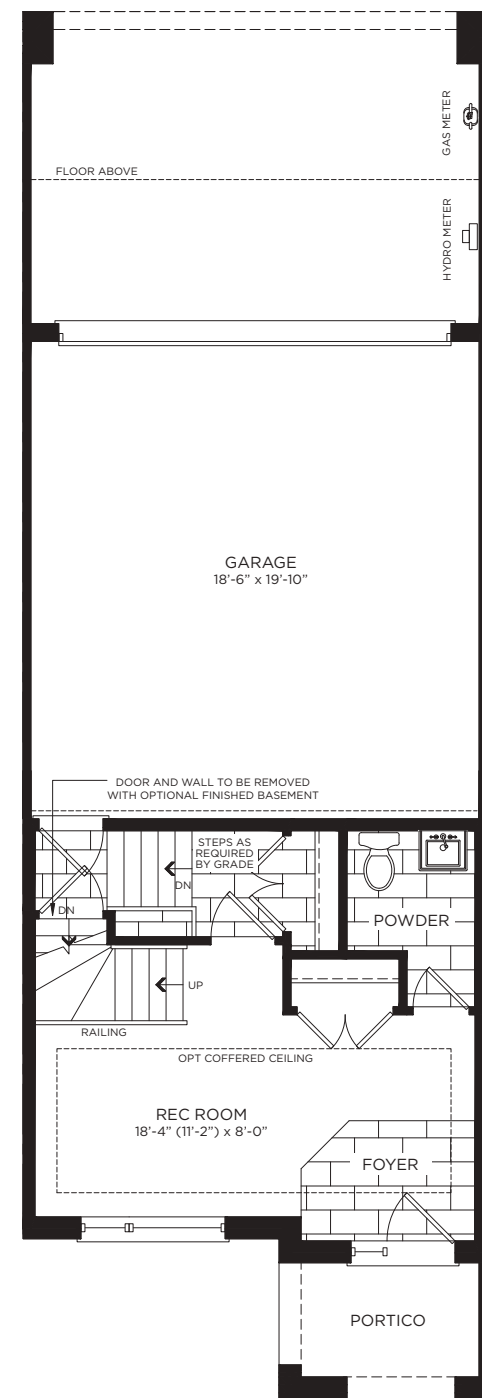
BLOCK 6



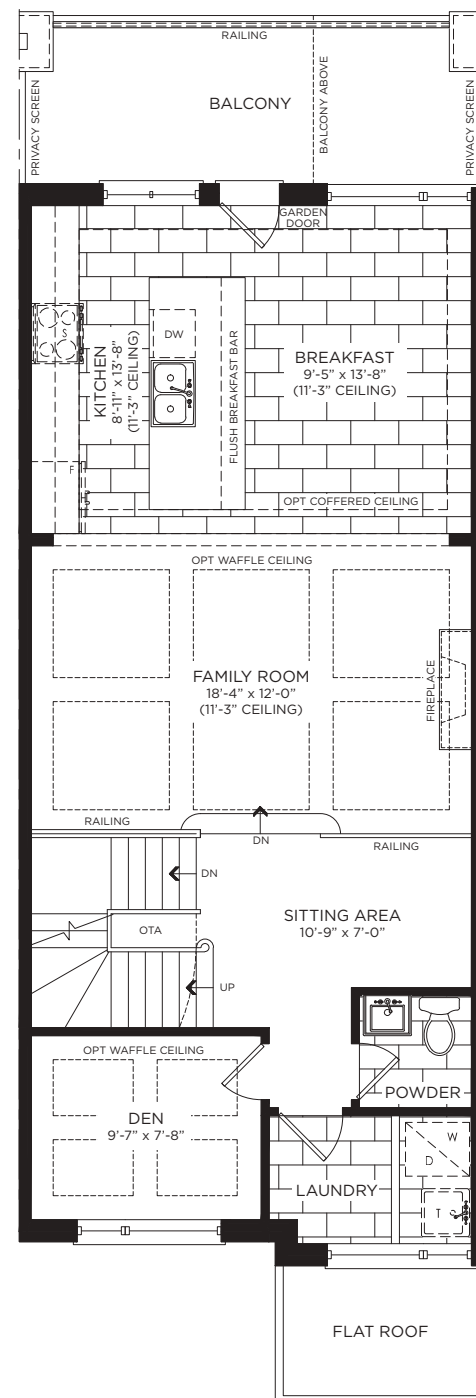
BLOCK 5



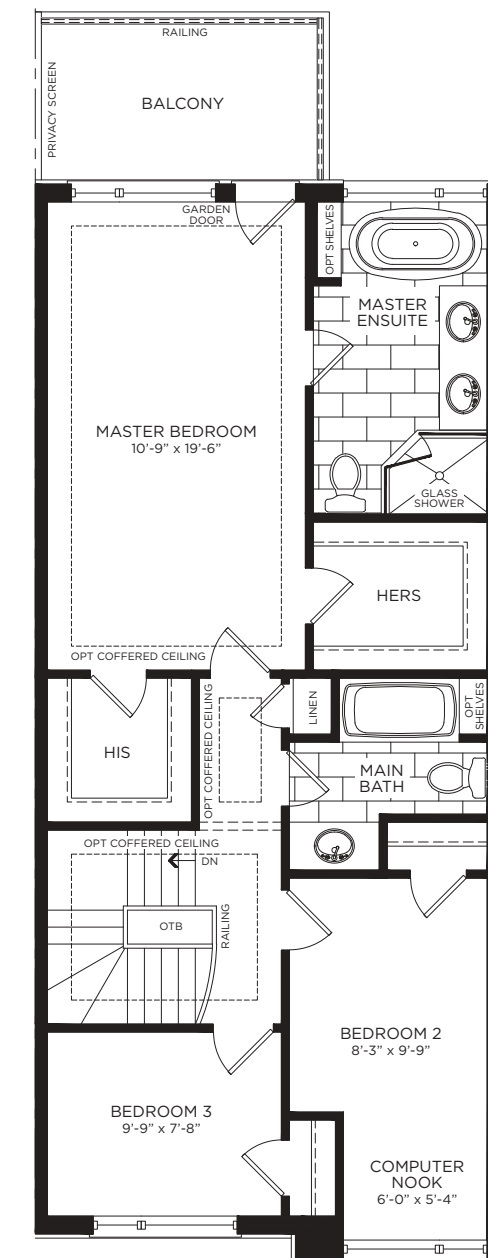
Ground Floor



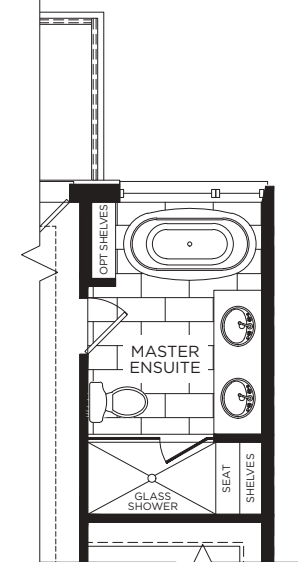
Opt. Ground Floor



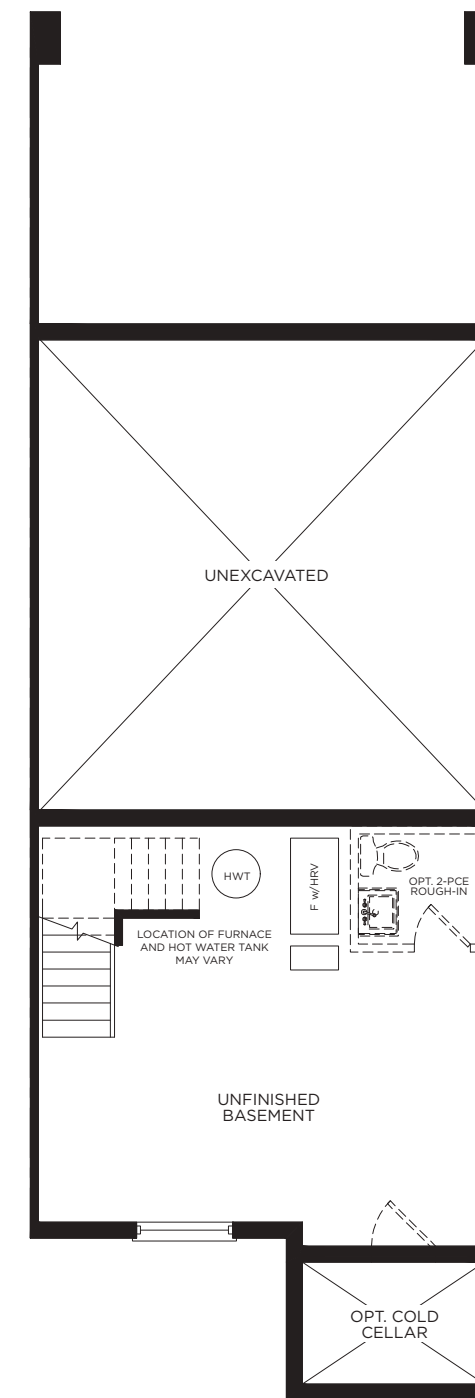
Main Floor



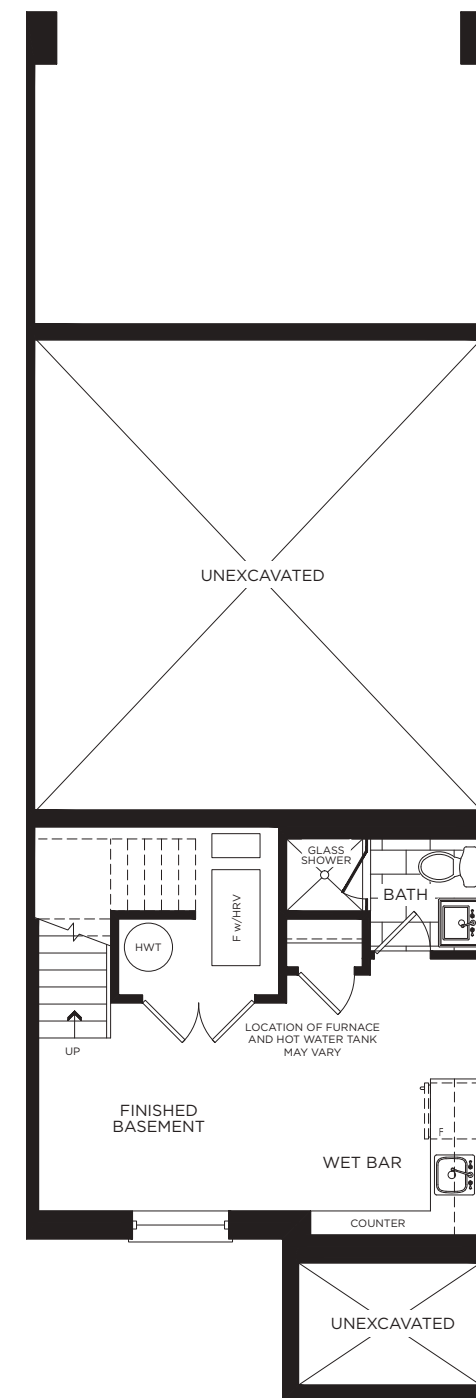
Upper Floor



Opt Master Ensuite Layout



Basement



Opt. Basement