

FIFTH
AVENUE
HOMES
RICHMOND HILL



THF-3
END & CORNER

FifthAvenueHomes.ca



FIFTH
AVENUE
HOMES
RICHMOND HILL

THF-3
END & CORNER

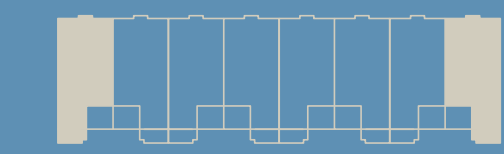
THF-3

END & CORNER

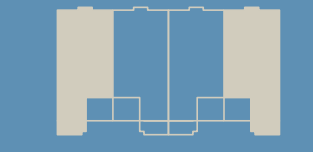
3 BEDROOM

End 2442 sq.ft.
Corner 2442 sq.ft.

Includes 352 sq.ft. of optional finished basement



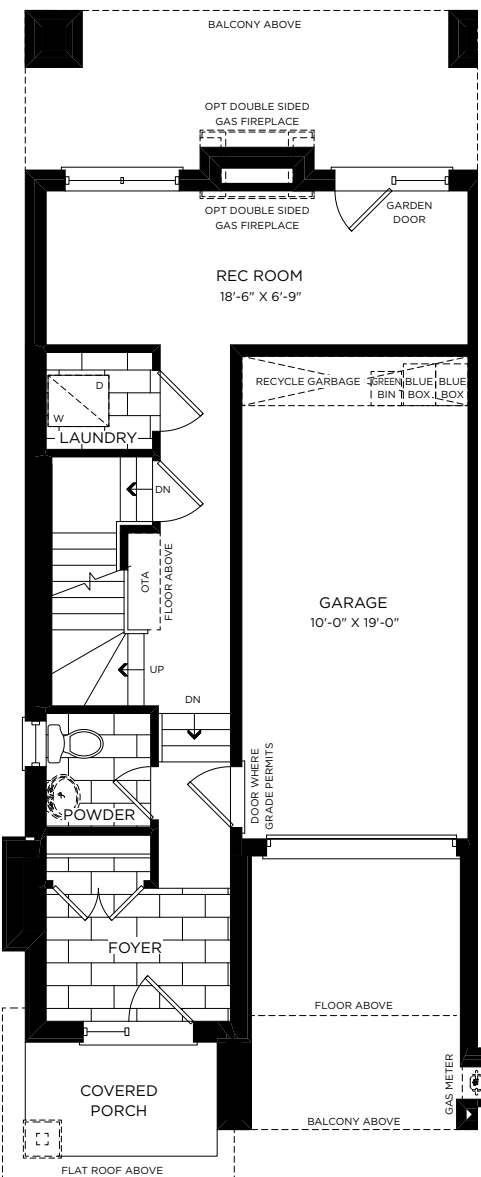
BLOCK 4



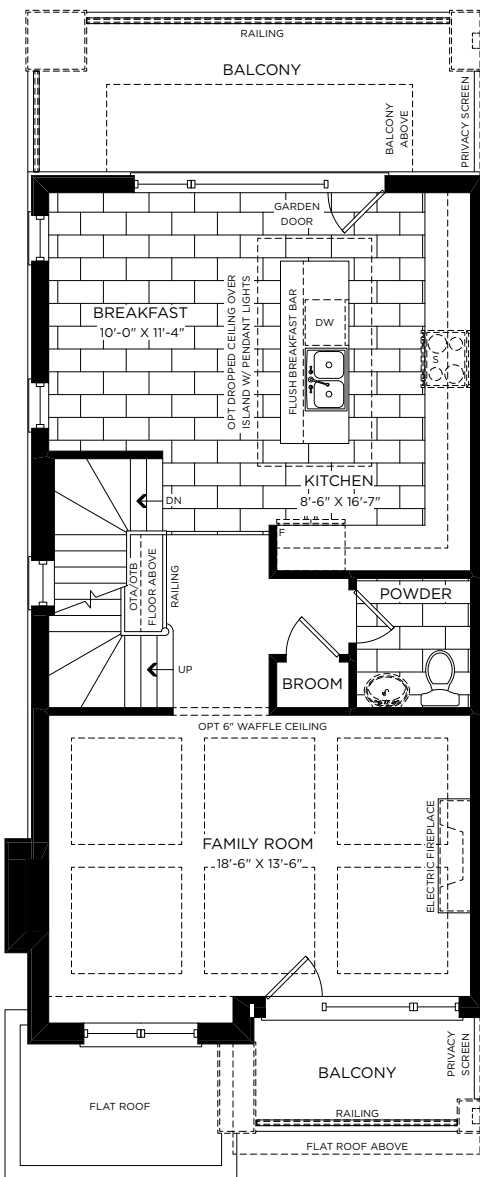
BLOCK 5



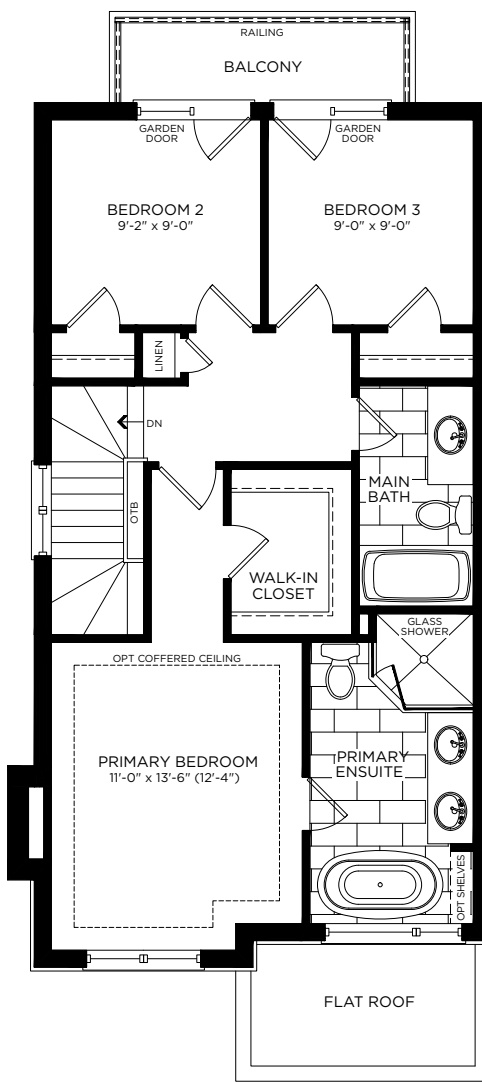
BLOCK 6



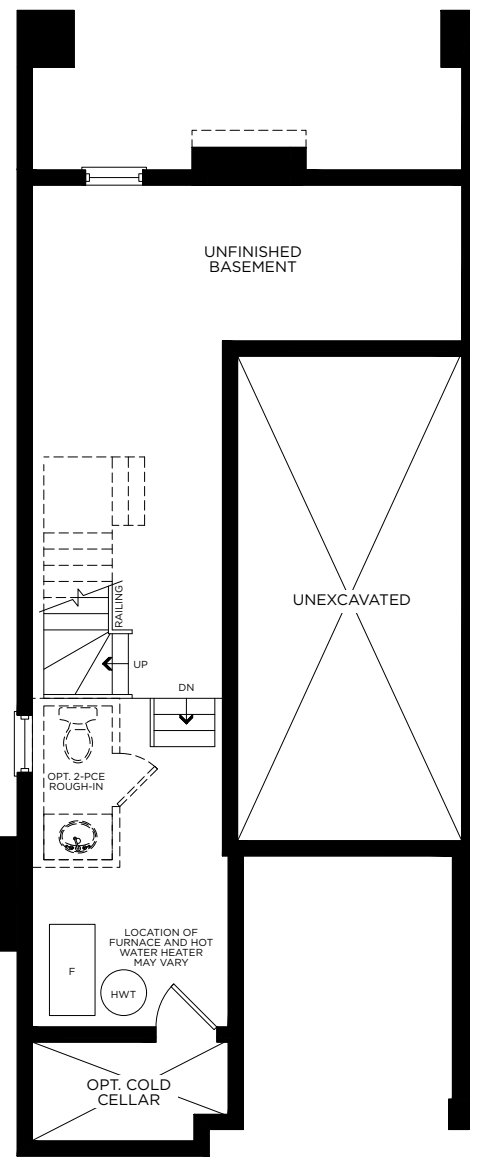
Ground Floor End Condition



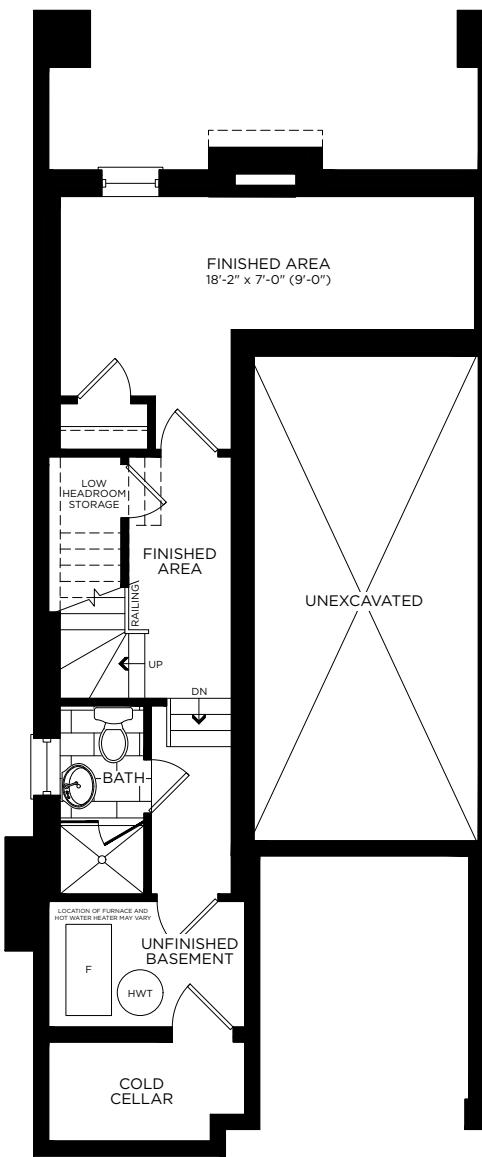
Main Floor End Condition



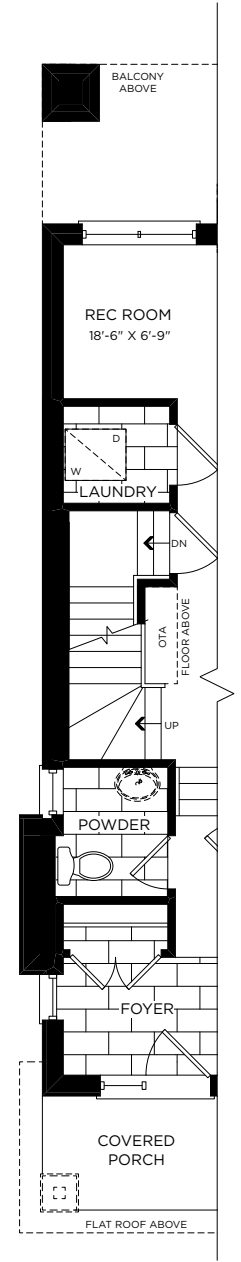
Upper Floor End Condition



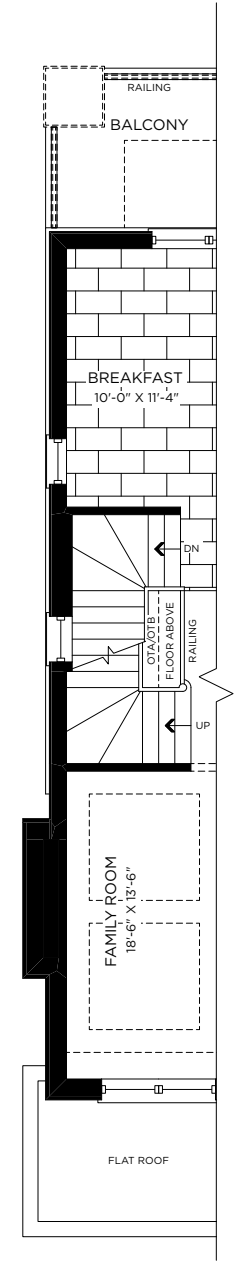
Basement End Condition



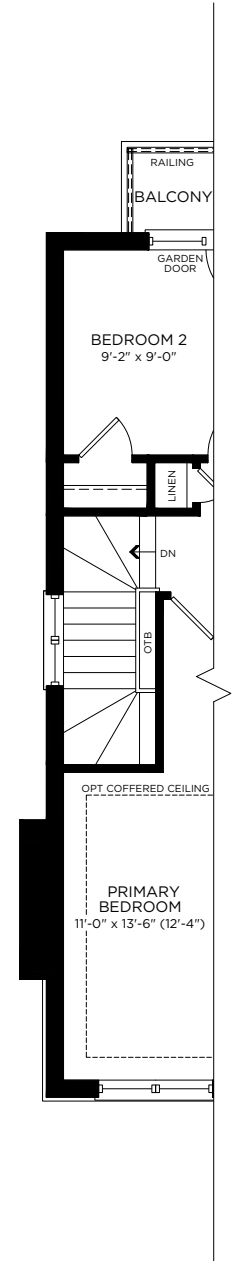
Opt. Basement End Condition



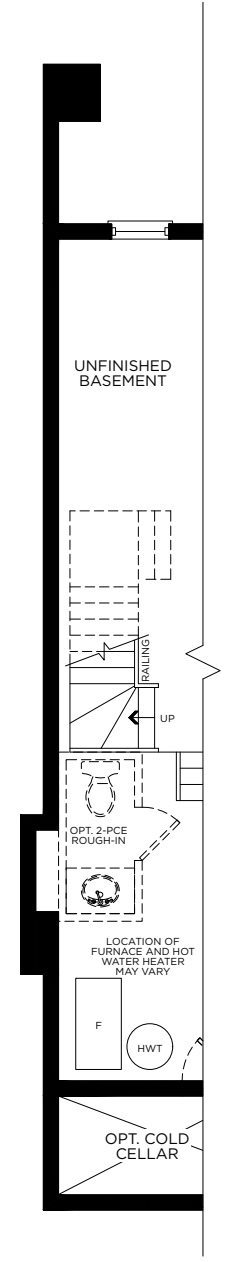
Partial Ground Floor Corner Unit



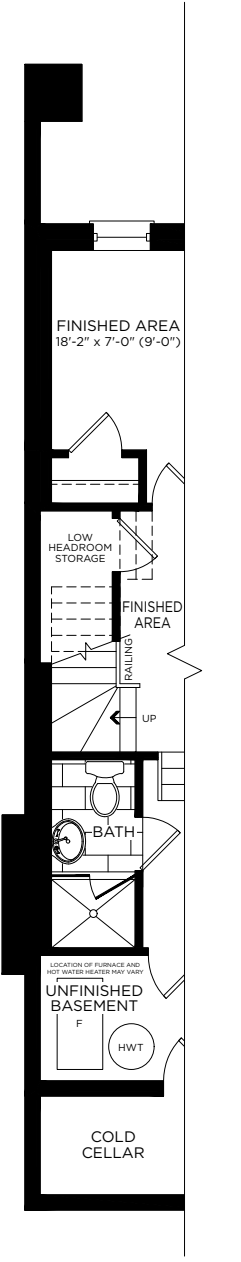
Partial Main Floor Corner Unit



Partial Upper Floor Corner Unit



Partial Basement Corner Unit



Partial Opt. Basement Corner Unit

E. & O. E. All materials, specifications, and floor plans are subject to change without notice and are not to be construed as being final and binding. All house renderings are artist's concepts only. All floor plans are approximate dimensions. Actual usable floor space, living area and square footage may vary from that which is stated. Window sizes and location may vary. Construction of a reverse mirror image Dwelling plan is hereby irrevocably accepted by the Purchaser without any right of abatement of Purchase Price and in full satisfaction of the Vendor's obligations as to construction of the Dwelling type hereinbefore described. Some designs may require upgraded lots. Fifth Avenue Homes. Reproduction of this plan is strictly prohibited. Apr. 2021.