

FIFTH AVENUE HOMES RICHMOND HILL



THR-2

FifthAvenueHomes.ca



FIFTH AVENUE HOMES RICHMOND HILL

THR-2

THR-2

3 BEDROOM

Interior 2440 sq.ft.

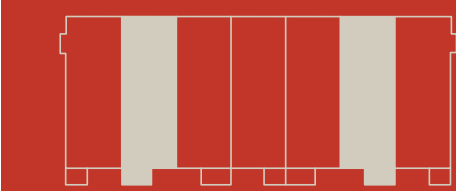
Includes 273 sq.ft. of optional finished basement

A 2440 sq.ft.

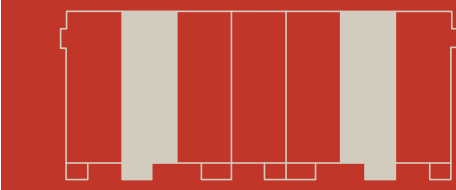
Includes 273 sq.ft. of optional finished basement

SP 2440 sq.ft.

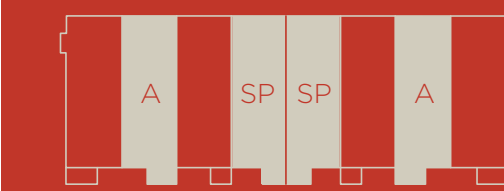
Includes 273 sq.ft. of optional finished basement



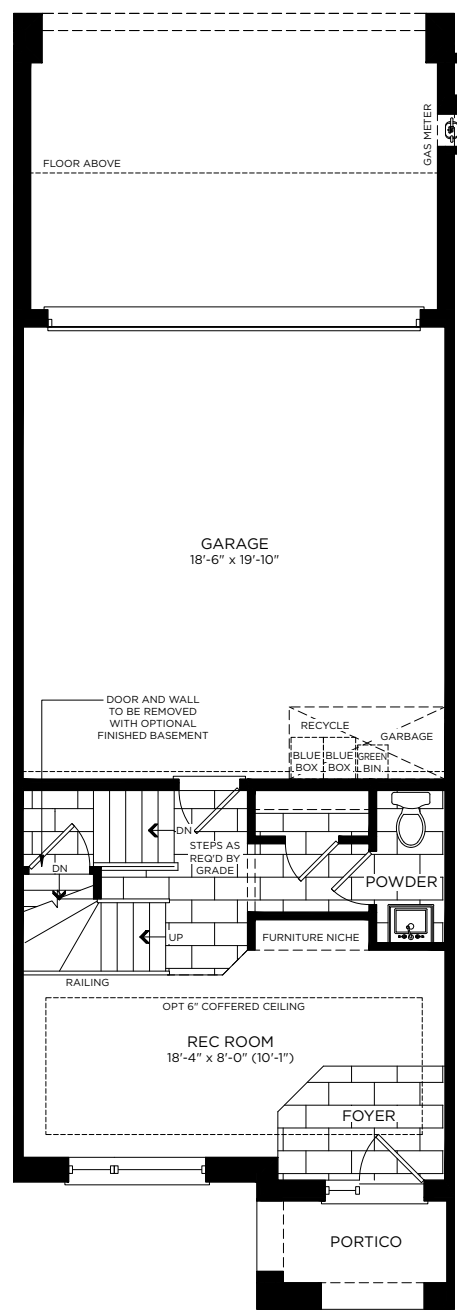
BLOCK 1



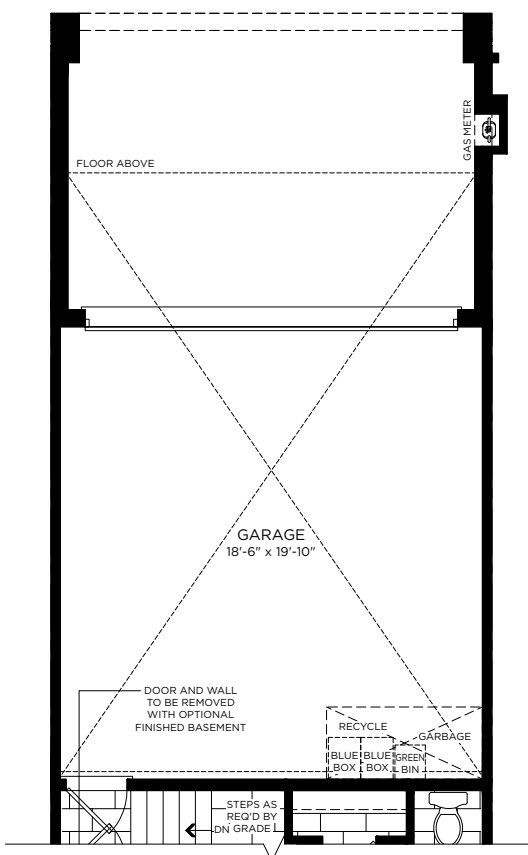
BLOCK 2



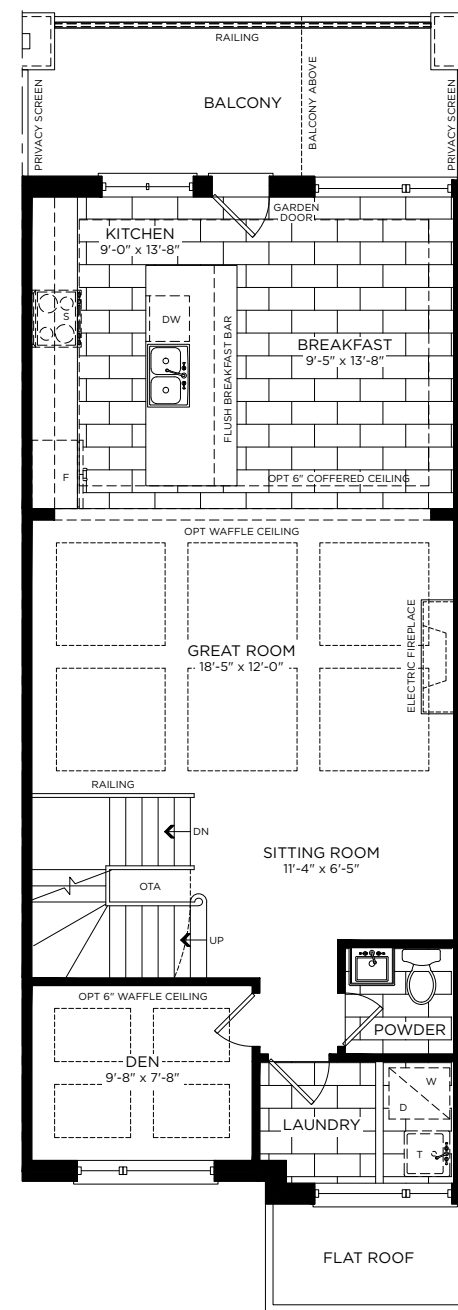
BLOCK 3 A & SP



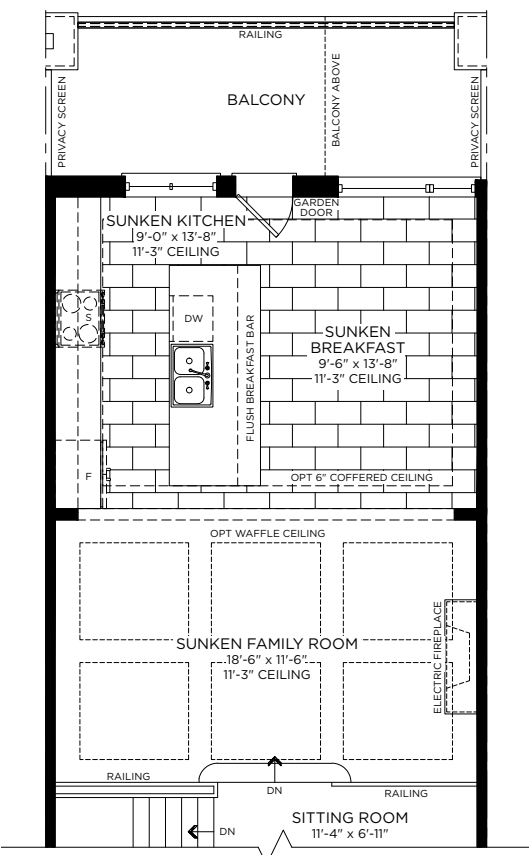
Ground Floor



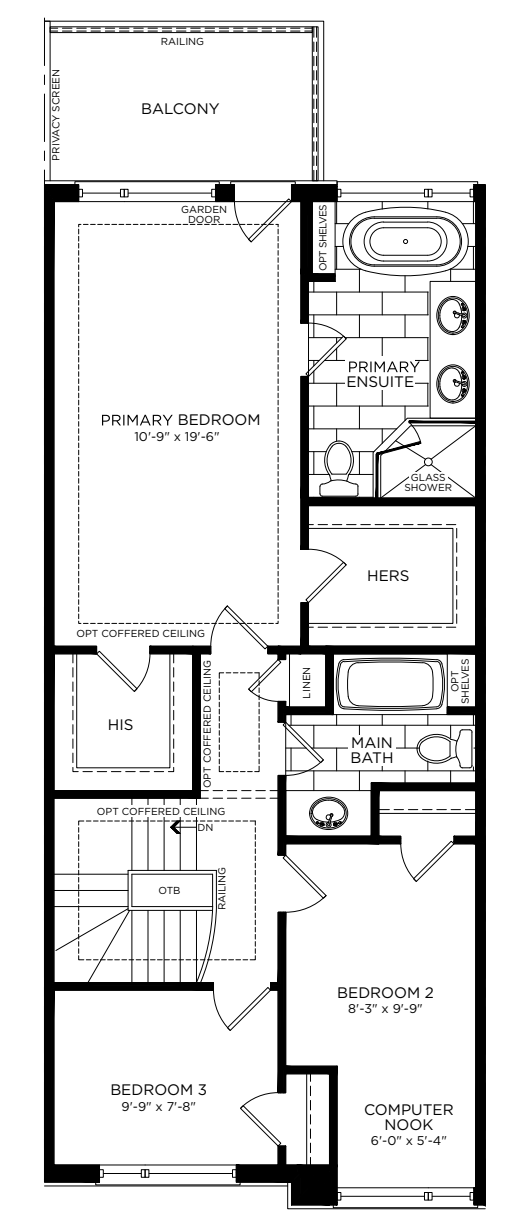
Partial Ground Floor A



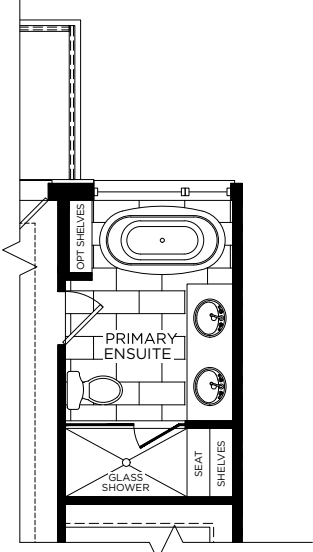
Main Floor



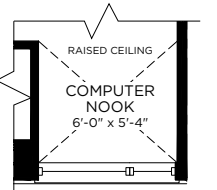
Partial Main Floor A



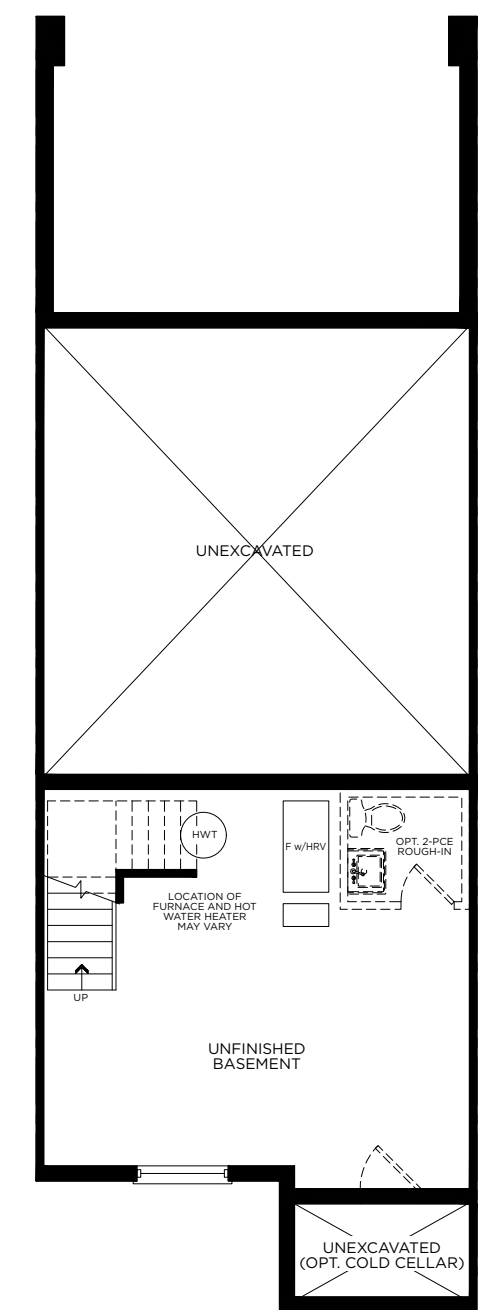
Upper Floor



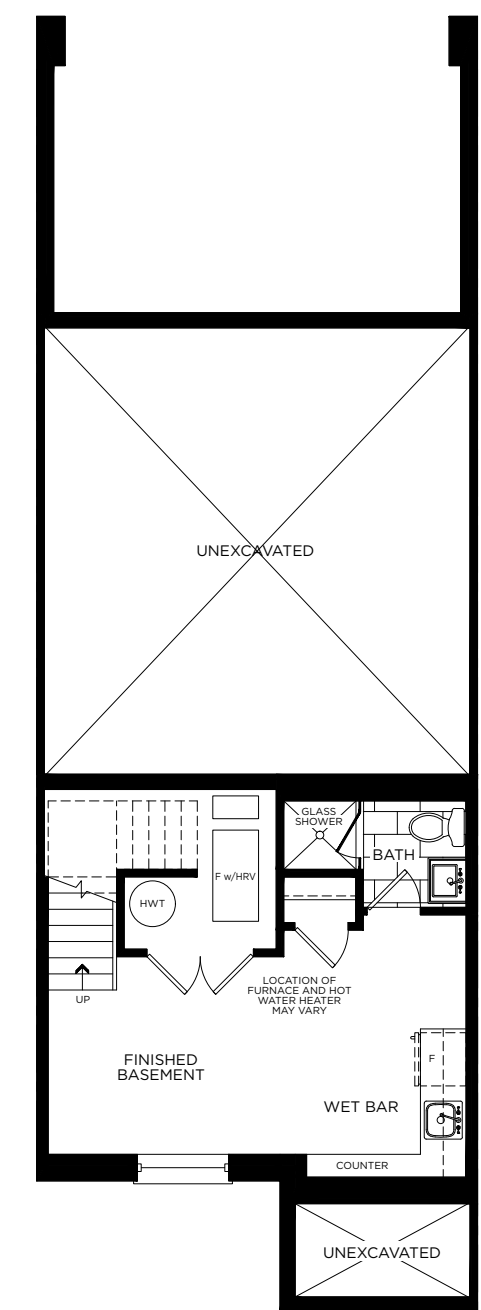
Opt Primary Ensuite Layout



Partial Upper Floor SP



Basement



Opt. Basement

E. & O. E. All materials, specifications, and floor plans are subject to change without notice and are not to be construed as being final and binding. All house renderings are artist's concepts only. All floor plans are approximate dimensions. Actual usable floor space, living area and square footage may vary from that which is stated. Window sizes and location may vary. Construction of a reverse mirror image Dwelling plan is hereby irrevocably accepted by the Purchaser without any right of abatement of Purchase Price and in full satisfaction of the Vendor's obligations as to construction of the Dwelling type hereinbefore described. Some designs may require upgraded lots. Fifth Avenue Homes. Reproduction of this plan is strictly prohibited. Apr. 2021.